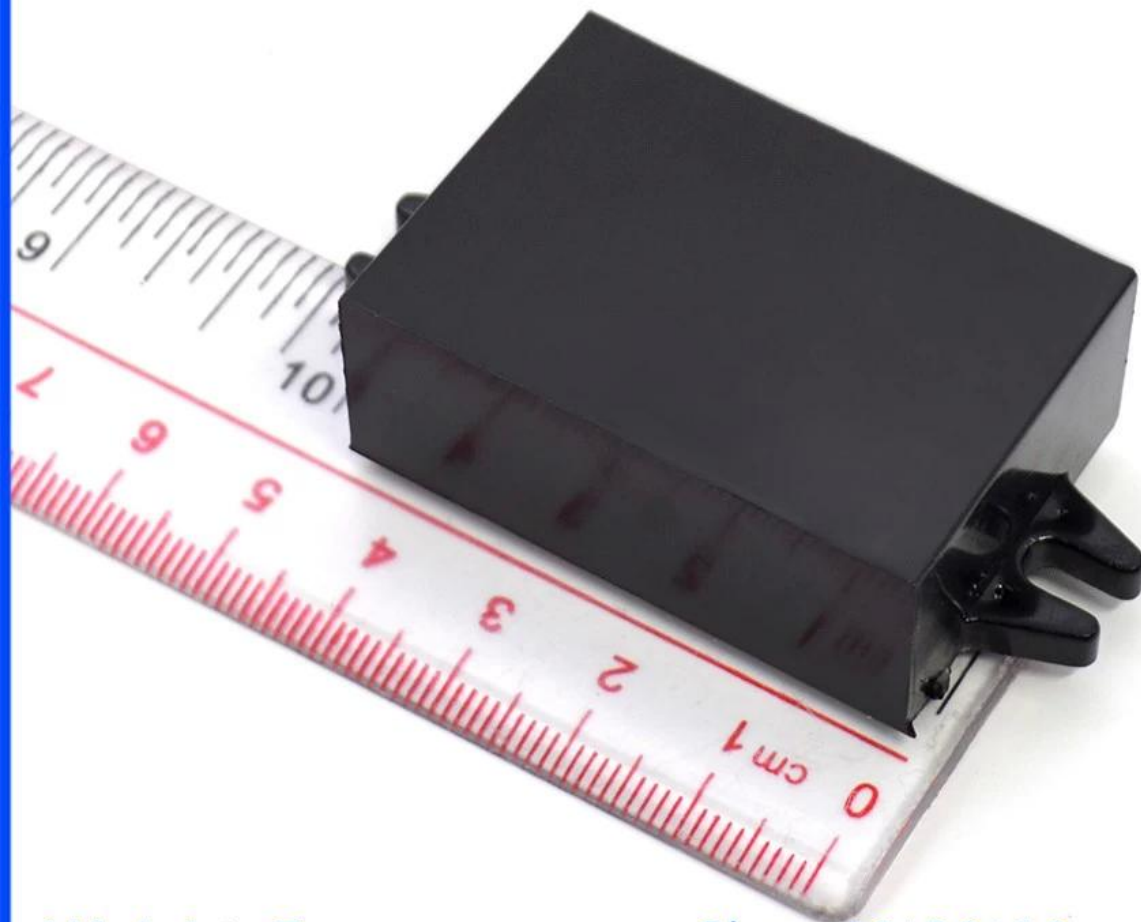


# China hot sale abs housing standard plastic junction enclosure supply

[China hot sale enclosure](#) show

SZOMK

*Customizable  
Cutout, sticker*



Weight: 7g

Size: 46\*32\*18 mm

Model No. AK-S-121

1.81\*1.25\*0.70 inch

SZOMK

*Customizable  
Cutout, sticker*



Weight: 7g

Size: 46\*32\*18 mm

Model No. AK-S-121

1.81\*1.25\*0.70 inch

SZOMK

Customizable  
Cutout, sticker



Weight: 7g

Size: 46\*32\*18 mm

Model No. AK-S-121

1.81\*1.25\*0.70 inch

**SZOMK**

*Customizable  
Cutout, sticker*



Weight: 7g

Size: 46\*32\*18 mm

Model No. AK-S-121

1.81\*1.25\*0.70 inch

|           |                            |
|-----------|----------------------------|
| Type      | Standard plastic enclosure |
| Model No. | AS-S-121                   |
| Color     | white & custom other color |
| Size      | 46X32X18mm                 |
| Weight    | 7g                         |

**We are pleased to offer you:**



1. Drilling, punching, etc. Welcome customized drawings.

2. drilling, screen printing, laser engraving, stickers and so on.

3. Short delivery time, usually 3-5 days after payment (according to the number)

4. For a timely response to your inquiry.

## Applications:





It is widely used in electronics, instrumentation, automation, communications power supply units, student projects, amplifiers, health care equipment, test and measurement equipment, industrial control, peripherals and interface, the switch box.

### **Abs plastic enclosure packing:**

1. enclosure industrial packing by poly bag.
2. Then by export standard carton.
3. As customer request

### **Outlet standard enclosure delivery:**

|                             |                    |
|-----------------------------|--------------------|
| standard stock product      | 1-3 working days   |
| custom product in stock     | 3-10 working days  |
| custom product out of stock | 10-30 working days |

### **Tip:**

Welcome to contact us for more details and quotes electrical box. Your inquiry will get prompt within 24 hours!