

OEM/create new mold quality outlet driver power abs plastic junction enclosures supply

[China driver power enclosure](#) show:

SZOMK

Customizable
Cutout, sticker



Weight: 22g

Size: 64*53*27 mm

Model No. AK-57

2.51*2.08*1.06 inch

SZOMK

Customizable
Cutout, sticker



Weight: 22g

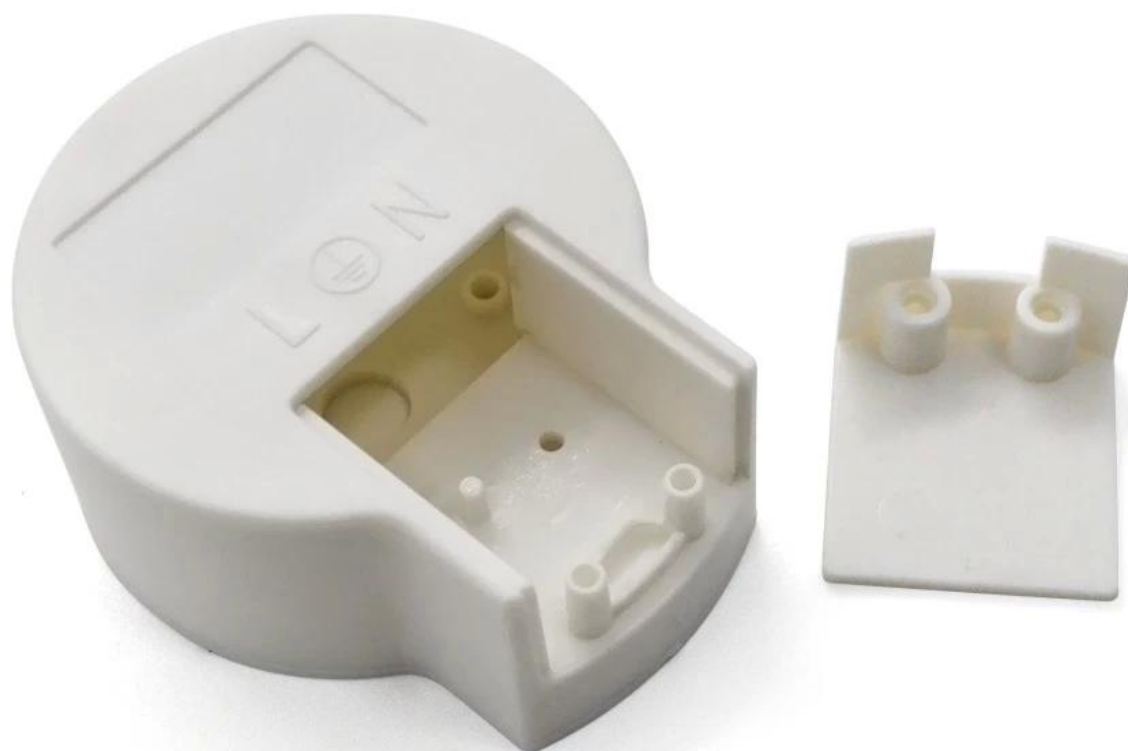
Size: 64*53*27 mm

Model No. AK-57

2.51*2.08*1.06 inch

SZOMK

Customizable
Cutout, sticker



Weight: 22g

Size: 64*53*27 mm

Model No. AK-57

2.51*2.08*1.06 inch

SZOMK

*Customizable
Cutout, sticker*



Weight: 22g

Size: 64*53*27 mm

Model No. AK-57

2.51*2.08*1.06 inch

Type	LED supply enclosue
Model No.	AK-57
Size	64X53X27mm
Weight	22g
Color	white & custom other color

We are pleased to offer you:



1. Drilling, punching, etc. Welcome customized drawings.

2. Drilling, screen printing, laser engraving, stickers and so on.

3. Short delivery time, usually 3-5 days after payment (according to the number)

4. For a timely response to your inquiry.

Applications:



It is widely used in electronics, instrumentation, automation, communications power supply units, student projects, amplifiers, health care equipment, test and measurement equipment, industrial control, peripherals and interface, the switch box.

Abs plastic enclosure packing:

1. enclosure industrial packing by poly bag.
2. Then by export standard carton.
3. As customer request

Outlet led enclosure delivery:

Standard stock product	1-3 working days
Custom product in stock	3-10 working days
Custom product out of stock	10-30 working days

Tip:

Welcome to contact us for more details and quotes electrical box. Your inquiry will get prompt within 24 hours!



T/T, WESTERN UNION, MONEY
GRAM AND PAYPAL ACCPETED.

Skype: 13691908154

Tel: +86 13691908154

E-mail: galaxie@szomk.net

[Contact Us](#)