

Quick Details:

- 1 Place of Origin: Zhejiang, China (Mainland)
- 2 Packaging Details:Box length:260mm ,Width:200mm Depth:100mm .1000pcs/box
- 3 Delivery Detail:normally 3-5 days after payment
- 4 Top quality products with certification of CE,UL,ROHS
- 5 Prompt reponse for your inquiry

Characterization

PCB terminal block is mainly characterized by the monomer and the circuit board soldering and wiring easy, and reliable screw connection. The pitch is 3.5, 3.81, 5.0, 5.08, and so on. The terminal blocks can be combined with 3P and 2P. The products without stitching are also available. The wiring directions are front, side, slope and other different styles

Technical Parameters for Screw Terminal Block/Connector :		
Electrical Specification	Mechanical Specification	Part & Material
Rated: 300V,10A	Temp.Range: -40C- +105 C	Body: PA66,UL94V-0
Contact resistance: 20mΩ Max	Max Soldering: +250 C,5s	Screw: Steel,Zn plating
Insulation resistance: 5000MΩ Min	Wire range: 22-14AWG(2.5MM2)	Wire Protector: Bronze,Ni plating
Dielectric strength : 2000VAC min/60 seconds	Strip Length: 4.5 -5mm	Terminal: Brass,Tin plating

SZOMK

RoHS

c **UL** US



CE

CQC



2EOMJC-5.08



3 g

SZOMK

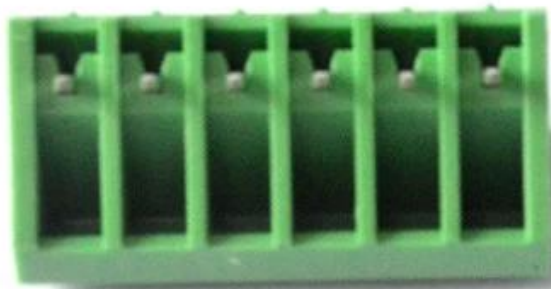
RoHS

c  US



CE

CQC



SZOMK

RoHS



CQC



SZOMK

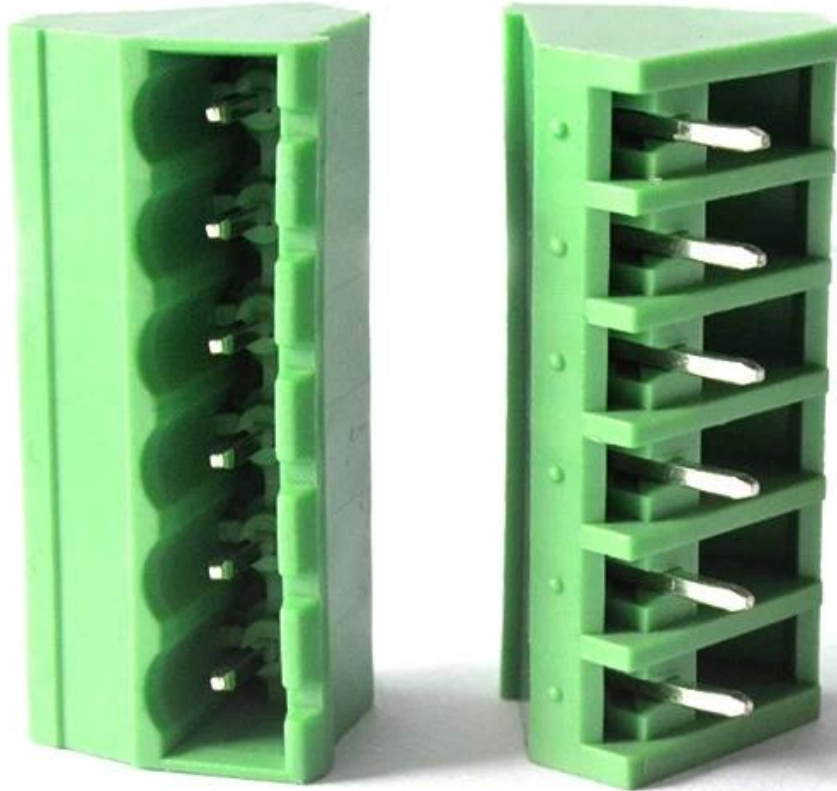
RoHS

c  US





CQC





QQ

2819022460



Tel

86-755-83222882
86-13418600500



Add

628Room,505 Building ,Shangbu industry,
Hangtian road ,Futian district ,Shenzhen,
China,518031



Email

hellen@szomk.com.cn



skype

szomk-002

