

It is widely used in electronic, instrumentation, automation, communications, power supply units, student projects, amplifiers, Medical and wellness devices, test and measurement equipment, industrial control, peripheral devices and interfaces, switch boxes.



ABS enclosure is used in many applications.

1. PCB, components, and other parts are mounted inside.
2. It is used for protection of the components from dust, moisture, and physical damage.
3. It is used for mounting of components in a specific location.

ABS enclosure is made of plastic.

1. Drilling, Punching, etc. are used for mounting components.
2. It is used for protection of the components from dust, moisture, and physical damage.
3. It is used for mounting of components in a specific location (3-5 mm).
4. It is used for mounting of components in a specific location.

ABS enclosure is used in many applications.

SZOMK



► **Enclosure Manufacturer**
www.chinaenclosure.com

SZOMK

Customizable
cutout, sticker
silkscreen, color



Weight: 271g
Model No. AK-H-34

Size: 6.81*3.35*1.97 inch
173*85*50 mm

SZOMK



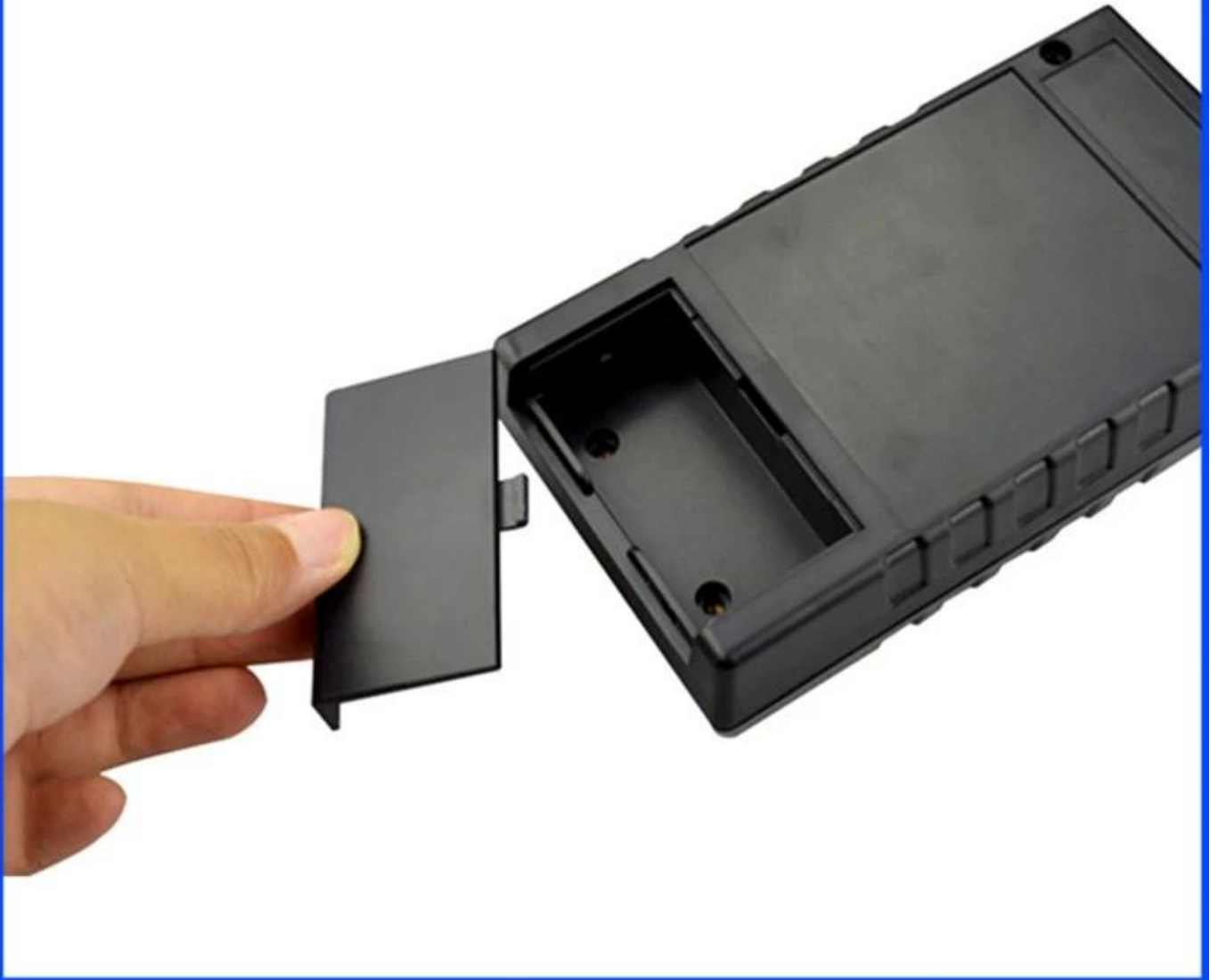
SZOMK



SZOMK



SZOMK



SZOMK



□□ □□□ □□



SZOMK

WE CAN DO



- ✓ **Provide thousands of public enclosure** *MOQ: 1 piece*
- ✓ **Small order custom** *MOQ: 20-30 pcs*
- ✓ **Design private custom enclosure (provide PCB)**
- ✓ **Molding, tooling (provide sample / STEP file)**



cutout, laser engrave, screen printing, sticker, acrylic plate, pvc label, color, silica gel rings, etc.



WE CAN DO

For HOUSING some of the Processing, Openings, Screen, Stickers, PVC LABEL



□ □ □ □ □



Our packaging

Plastic foam packaging



Metal shell packaging



Plastic box packaging



Packaging & Shipping

TNT
sure we can

UPS
WE LOGISTICS™

SF EXPRESS
顺丰速运

FedEx
Express

EMS

DHL

PayPal **WESTERN UNION** **VISA** **ESCROW** **MasterCard** **HSBC**

□□□□



QQ

2033950667



Tel

86-0755-83222882



Add

16-6Floor, 505Building, Shangbu In dustry
Area, Hangtian RD, Futian District , Shenzhen
China



Email

william@szomk.ent



Skype

szomk-002