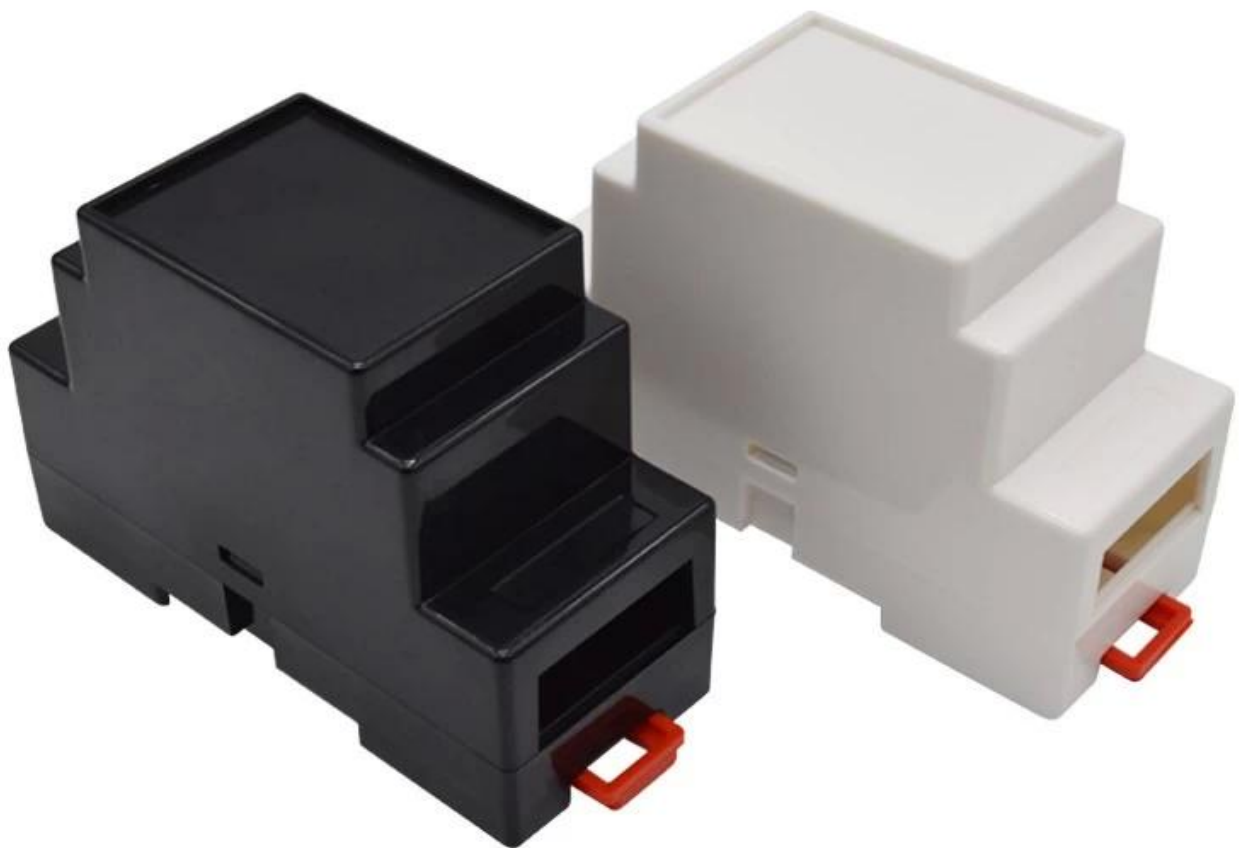


China ABS electrical junction box 88X37X59mm ip 54 din rail enclosure

[China ABS electrical junction box](#) show:

SZOMK

*Customizable
Cutout, sticker*



Weight: 40g

Size: 88*37*59 mm

Model No. AK-DR-01

3.46*1.46*2.32 inch

SZOMK

*Customizable
Cutout, sticker*



Weight: 40g

Size: 88*37*59 mm

Model No. AK-DR-01

3.46*1.46*2.32 inch

SZOMK

*Customizable
Cutout, sticker*



Weight: 40g

Size: 88*37*59 mm

Model No. AK-DR-01

3.46*1.46*2.32 inch

SZOMK

*Customizable
Cutout, sticker*



Weight: 40g

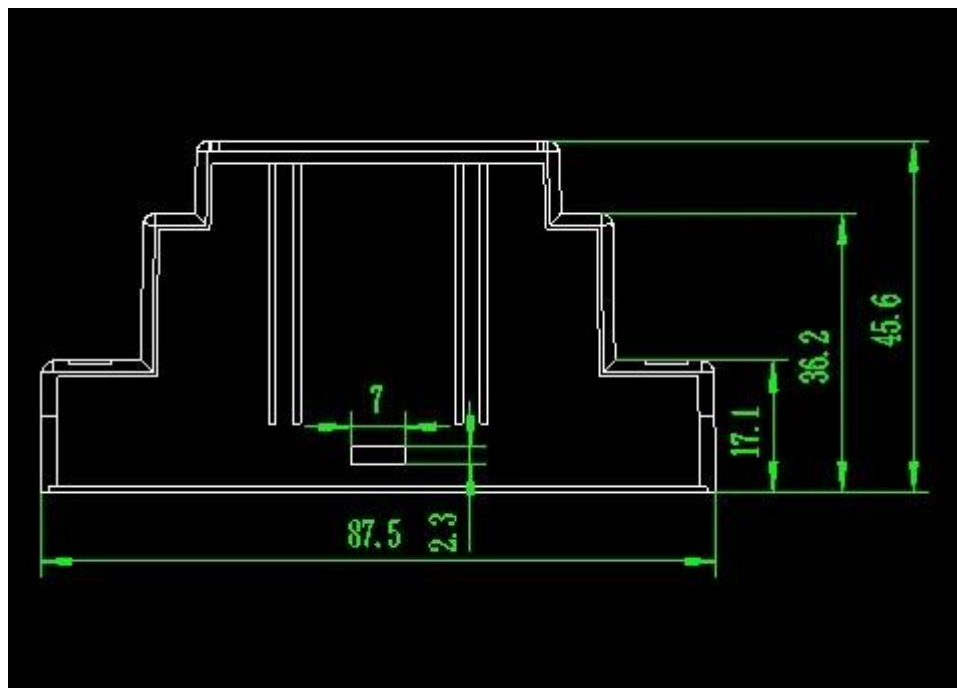
Size: 88*37*59 mm

Model No. AK-DR-01

3.46*1.46*2.32 inch

Type	Din Rail plastic enclosure
Model No.	AK-DR-01
Size	88X37X59mm
Weight	40g
Color	White, black&custom other color

IP54 Din Rail enclosure drawing:



We are pleased to offer you:



1. Drilling, punching, etc. Welcome customized drawings.
2. Screen printing, laser engraving, stickers and so on.
3. Short delivery time, usually 3-5 days after payment (according to the number)
4. For a timely response to your inquiry

Applications:



It is widely used in electronics, instrumentation, automation, communications, power supply units, student projects, amplifiers, health care equipment, test and measurement equipment, industrial control, peripherals and interfaces, the switch box.

ABS junction box enclosure delivery:

Standard stock product	1-3working days
Custom product in stock	3-10working days
Custom product out of stock	10-20working days

Tips:

Welcome to contact us for more details and quotes electrical box. Your inquiry will get prompt reply within 24 hours!

Contact with us:



T/T, WESTERN UNION, MONEY
GRAM AND PAYPAL ACCPETED.

Skype: szomk-002

Tel: +86 13392837250

E-mail: dee@szomk.net

Contact Us