

Introduction for plastic outdoor electric box:

- 1 Use of one sachet of silica gel for water-proof which is highly water-proof and highly sealed
- 2 Use of copper bolts and stainless steel screws for the external body
- 3 Wall Hanging nails and wall hanging screws
- 4 Screws spots with their covers
- 5 Water-proof level up to IP68
- 6 Exclusive package for each unit

We are pleased to provide you with:

- 1 Drilling,Punching ,etc. Welcome to provide drawings custom.
- 2 Silkscreen ,Laser Carve, Sticker ,etc.
- 3 Short lead time,normally 3-5 days after payment(according to quantity)
- 4 Prompt response for your inquiry

Applications:

It is widely used in electronic, instrumentation, automation, communications, power supply units, student projects, amplifiers, Medical and wellness devices, test and measurement equipment, industrial control, peripheral devices and interfaces, switch boxes.

Warm Prompt:

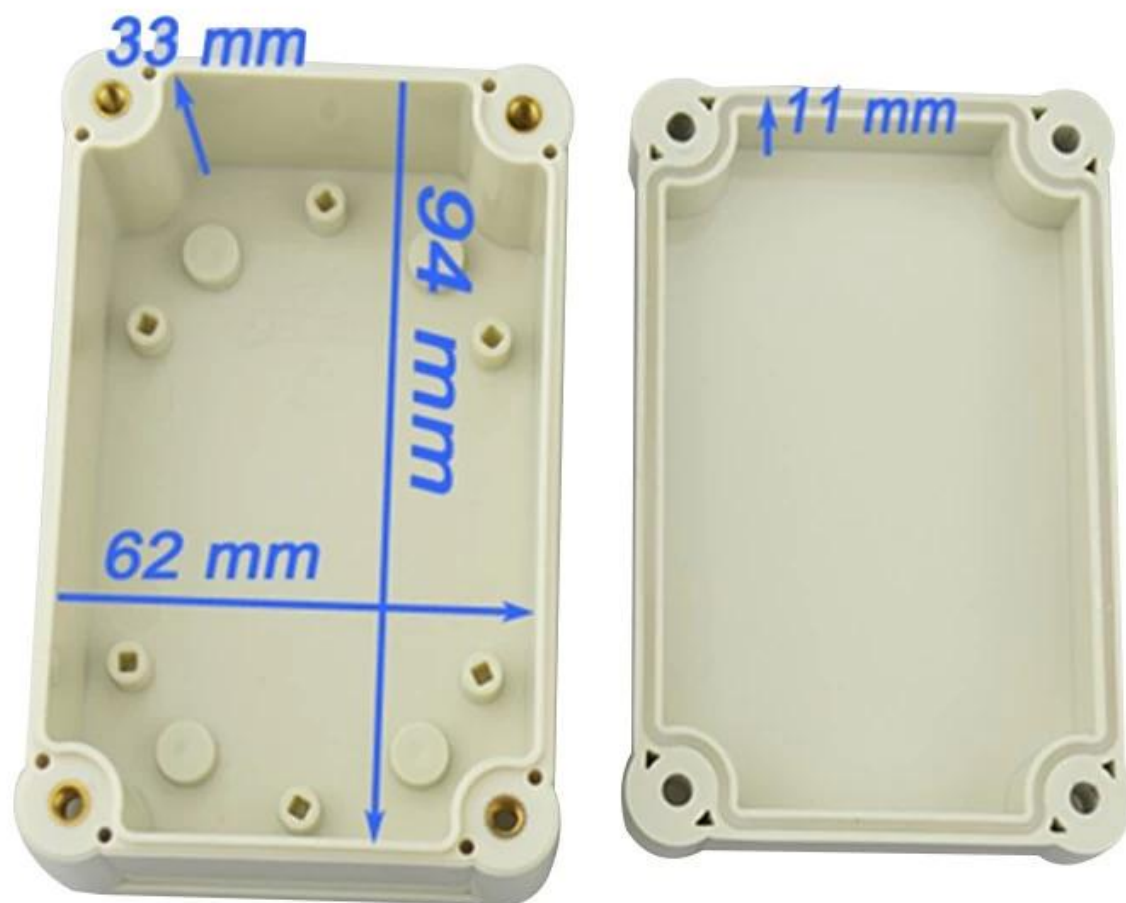
Welcome to contact us for more details and quotations for electrical box ,your inquiry will surely get prompt response in 24 hours!

Here are more pictures for electrical box :

SZOMK

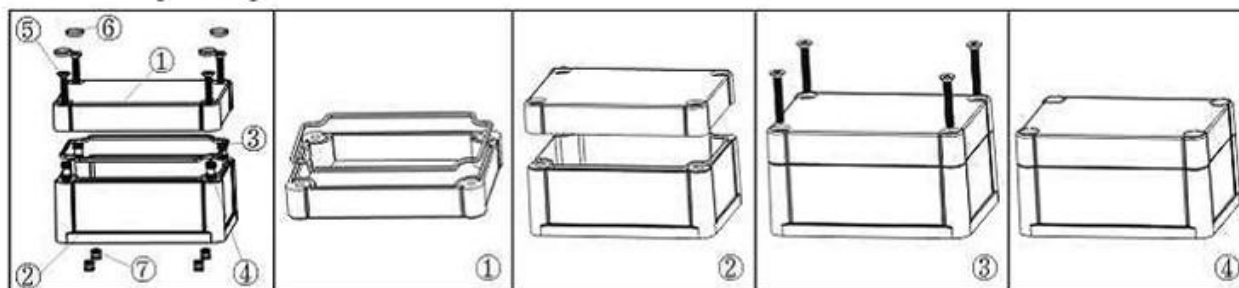


SZOMK



SZOMK





Epithecus (1PCS)
Material:PC
Color:Transparent



Hypotheca (1PCS)
Material:ABS
Color:Light Grey(FS20412)



Gasket (1PCS)
Material:Rubber
Size:96.5*64.5*1.8 mm



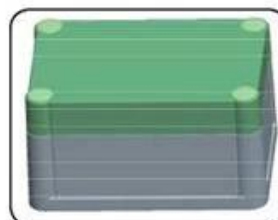
Copper Nut(4PCS)
Material:Copper
Standard:M4*10
Color:Copper



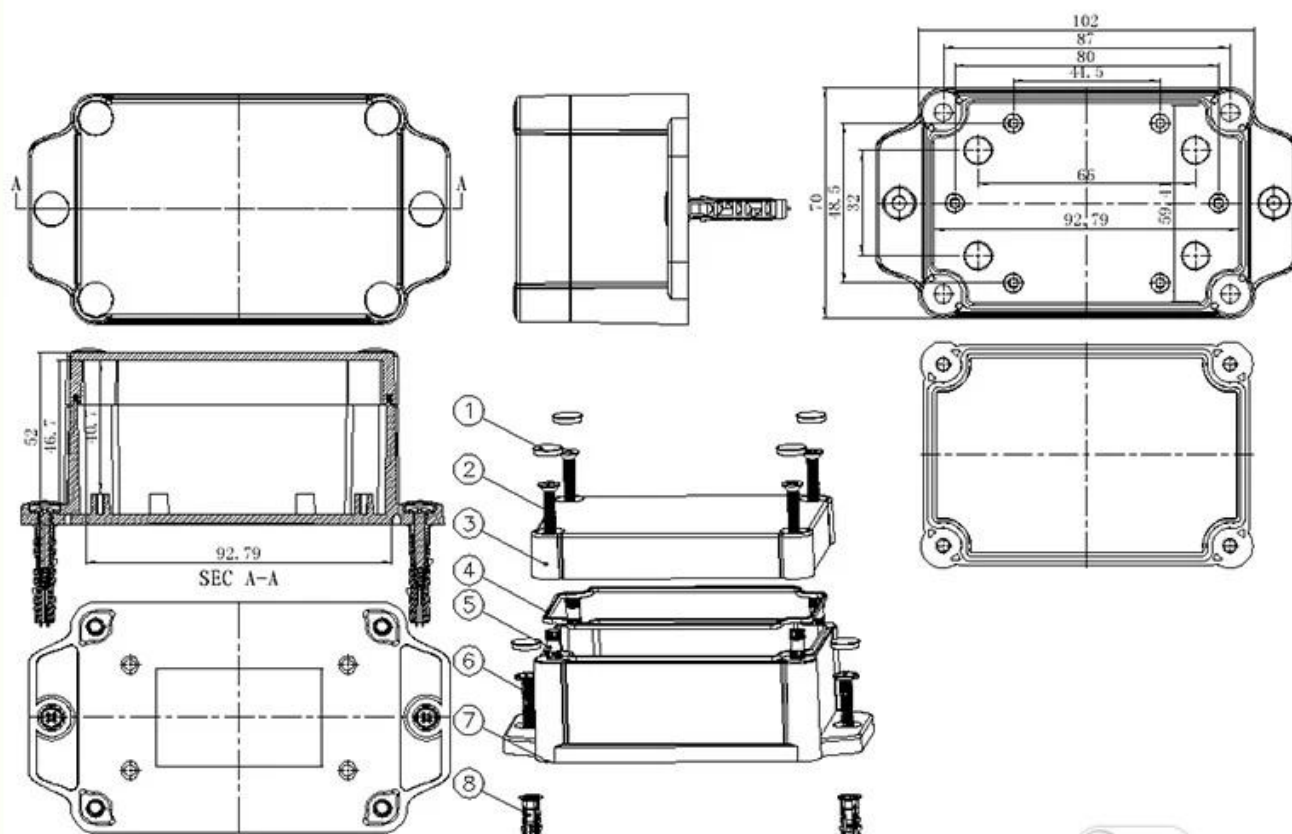
Grub Screw(4PCS)
Material:Stainless Steel
Standard:M4*25



Screw Lid(6PCS)
Material:ABS
Color:Light Grey(FS20412)



SZOMK





T/T, WESTERN UNION, MONEY
GRAM AND PAYPAL ACCPETED.

Skype: 13691908154

Tel: +86 13691908154

E-mail: galaxie@szomk.net

Contact Us