

# China abs driver power led plastic junction enclosure supply

China driver power enclosure show:



SZOMK

Customizable  
Cutout, sticker



Weight: 41g

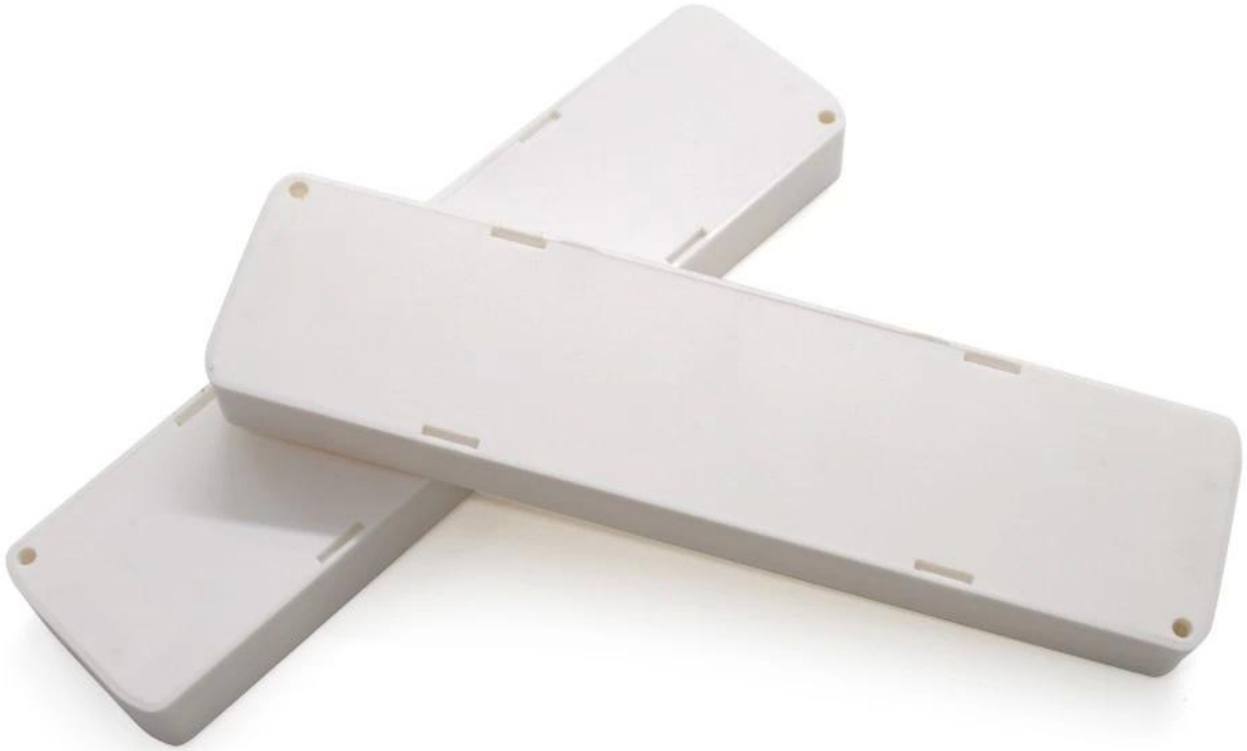
Size: 184\*46\*18 mm

Model No. AK-58

7.24\*1.81\*0.70 inch

SZOMK

*Customizable  
Cutout, sticker*



Weight: 41g

Size: 184\*46\*18 mm

Model No. AK-58

7.24\*1.81\*0.70 inch

**SZOMK**

*Customizable  
Cutout, sticker*



Weight: 41g

Size: 184\*46\*18 mm

Model No. AK-58

7.24\*1.81\*0.70 inch

Type	LED supply enclosure
Model No	AK-58
Weight	41g
Color	white & custom other color
Size	184X46X18mm

**We are pleased to offer you:**



1.Drilling.punching, etc.Welcome customized drawings.

2.drilling,screen printing,laser engraving,stickers and so on.

3.Short delivery time,usually 3-5 days after payment (according to the number)

4.For a timely response to your inquiry.

## Applications:





It is widely used in electronics, instrumentation, automation, communications power supply units, student projects, amplifiers, health care equipment, test and measurement equipment, industrial control, peripherals and interface, the switch box.

### **Abs plastic enclosure packing:**

1. enclosure industrial packing by poly bag.
2. Then by export standard carton.
3. As customer request

### **Outlet led enclosure delivery:**

Standard stock product	1-3 working days
Custom product in stock	3-10 working days
Custom product out of stock	10-30 working days

### **Tip:**

Welcome to contact us for more details and quotes electrical box. Your inquiry will get prompt within 24 hours!