

China abs plastic led driver supply enclosure e manufacture

[China abs plastic enclosure](#) show:

SZOMK

*Customizable
Cutout, sticker*



Weight: 69g

Size: 124*79*30 mm

Model No. AK-51

4.88*3.11*1.18 inch

SZOMK

Customizable
Cutout, sticker



Weight: 69g

Model No. AK-51

Size: 124*79*30 mm

4.88*3.11*1.18 inch

SZOMK

*Customizable
Cutout, sticker*



Weight: 69g

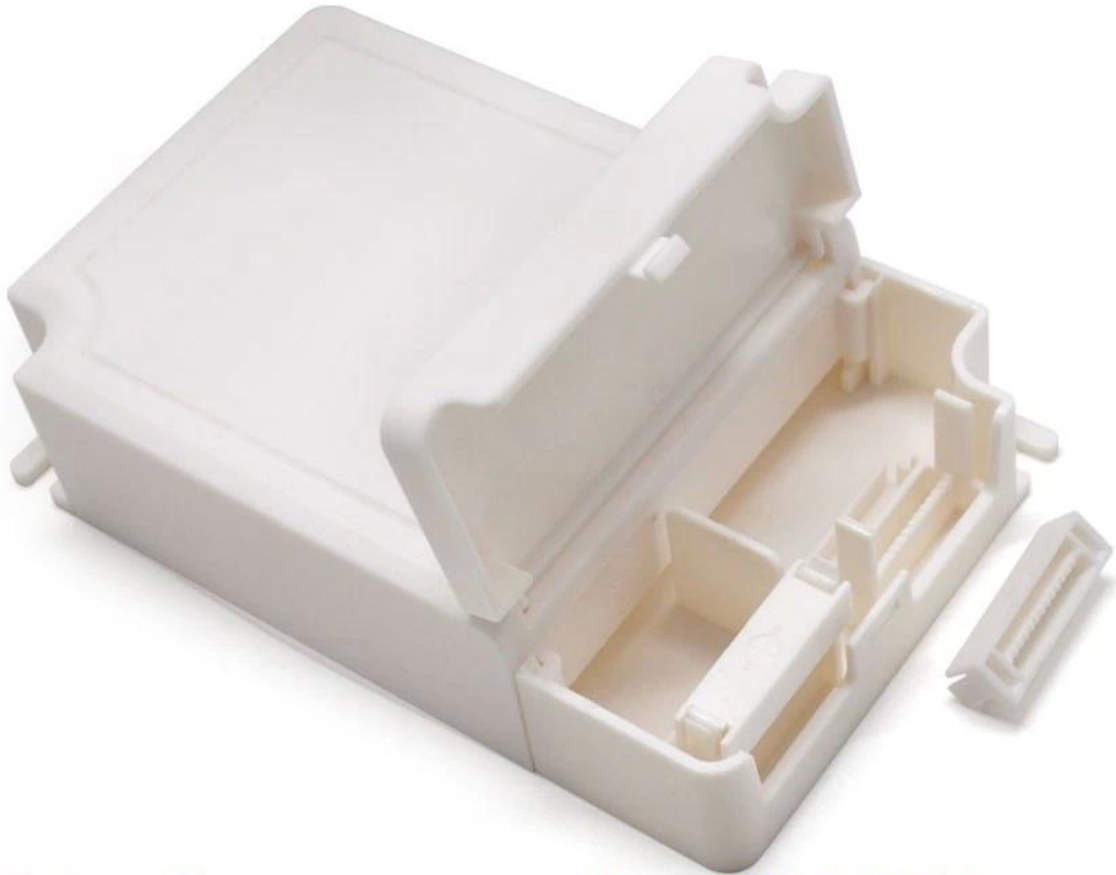
Size: 124*79*30 mm

Model No. AK-51

4.88*3.11*1.18 inch

SZOMK

*Customizable
Cutout, sticker*



Weight: 69g

Size: 124*79*30 mm

Model No. AK-51

4.88*3.11*1.18 inch

Type	power supply enclosure
Model No	AK-51
Size	124X79X30mm
Weight	69g
Color	white& custom other color

We are pleased to offer you:



1. Drilling, punching, etc. Welcome customized drawings.
2. Drilling, screen printing, laser engraving, stickers and so on.
3. Short delivery time, usually 3-5 days after payment (according to the number)
4. For a timely response to your inquiry.

Applications:



It is widely used in electronics, instrumentation, automation, communications power supply units, student projects, amplifiers, health care equipment, test and measurement equipment, industrial control, peripherals and interface, the switch box.

LED driver enclosure packing:

1. enclosure industrial packing by poly bag.
2. Then by export standard carton.
3. As customer request

Driver supply enclosure delivery:

Standard stock product	1-3working days
Custom product in stock	3-10working days
Custom product out of stock	10-20working days

Tip:

Welcome to contact us for more details and quotes electrical box. Your inquiry will get prompt within 24 hours!