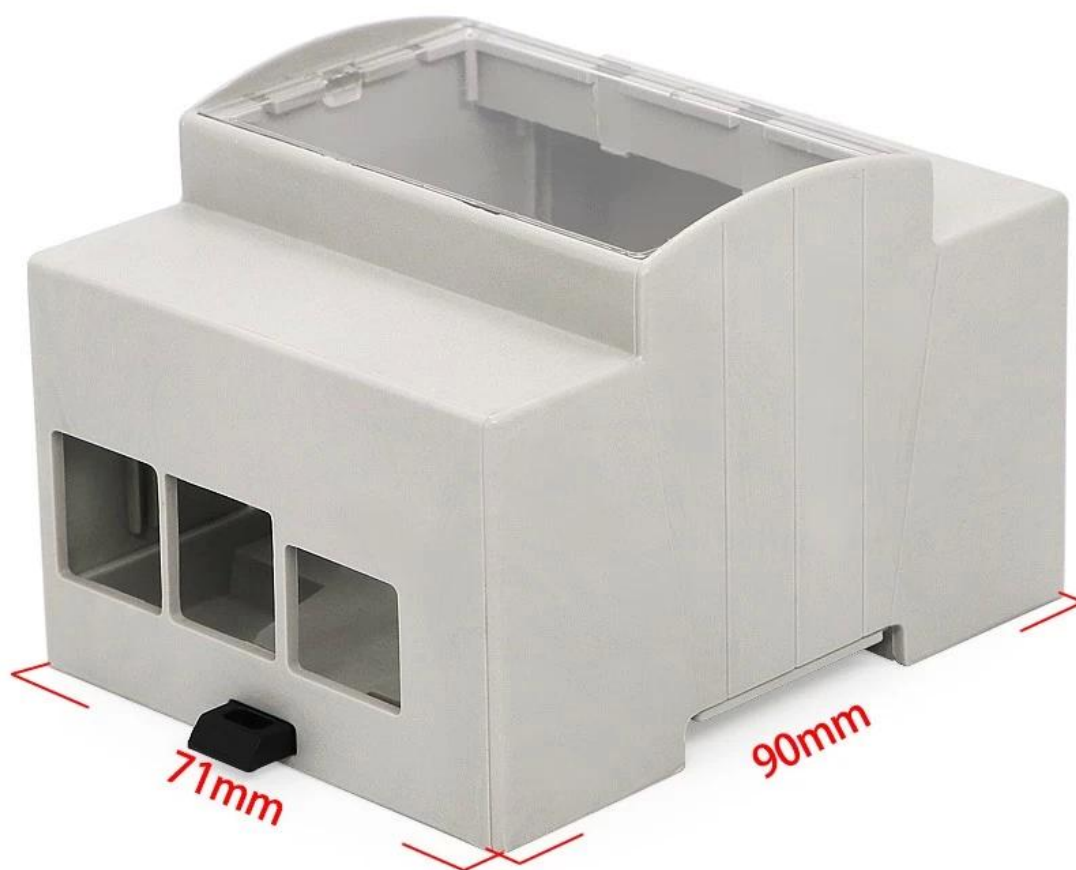


Guangdong high quality abs plastic din rail 90X71X62mm industrial junction box manufacture

High quality enclosure show:

SZOMK

*Customizable
Cutout, sticker*



Weight: 56g

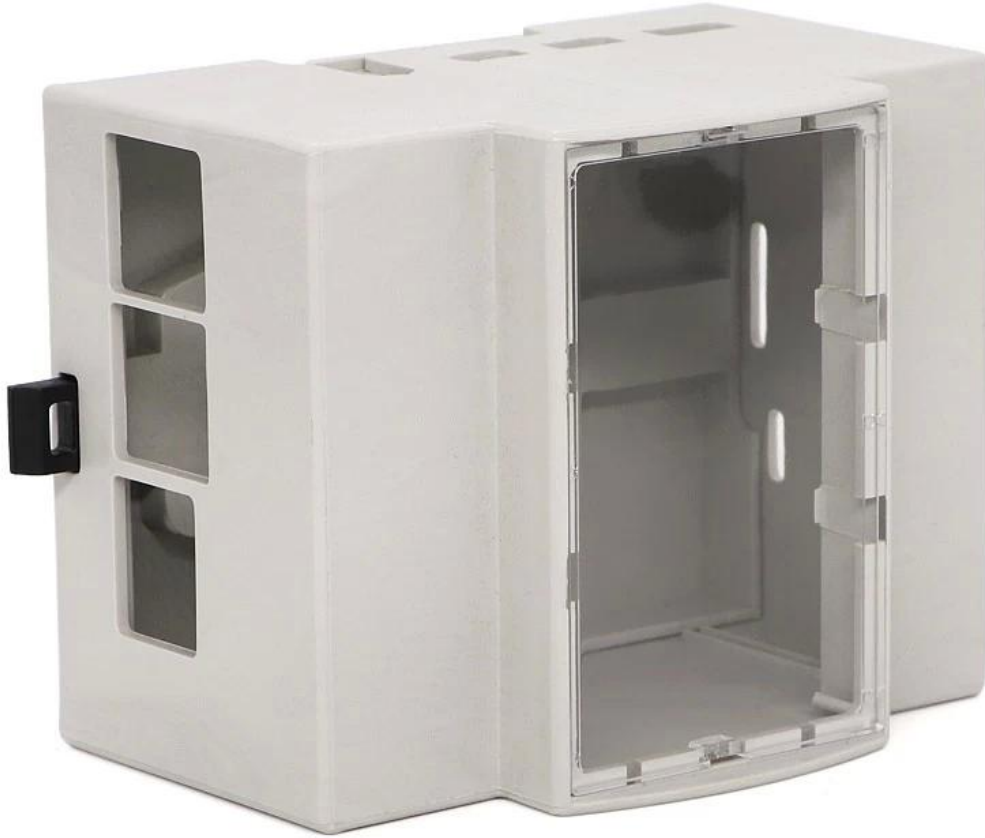
Size: 71*90*62 mm

Model No. AK-DR-63

2.79*3.54*2.44 inch

SZOMK

*Customizable
Cutout, sticker*



Weight: 56g

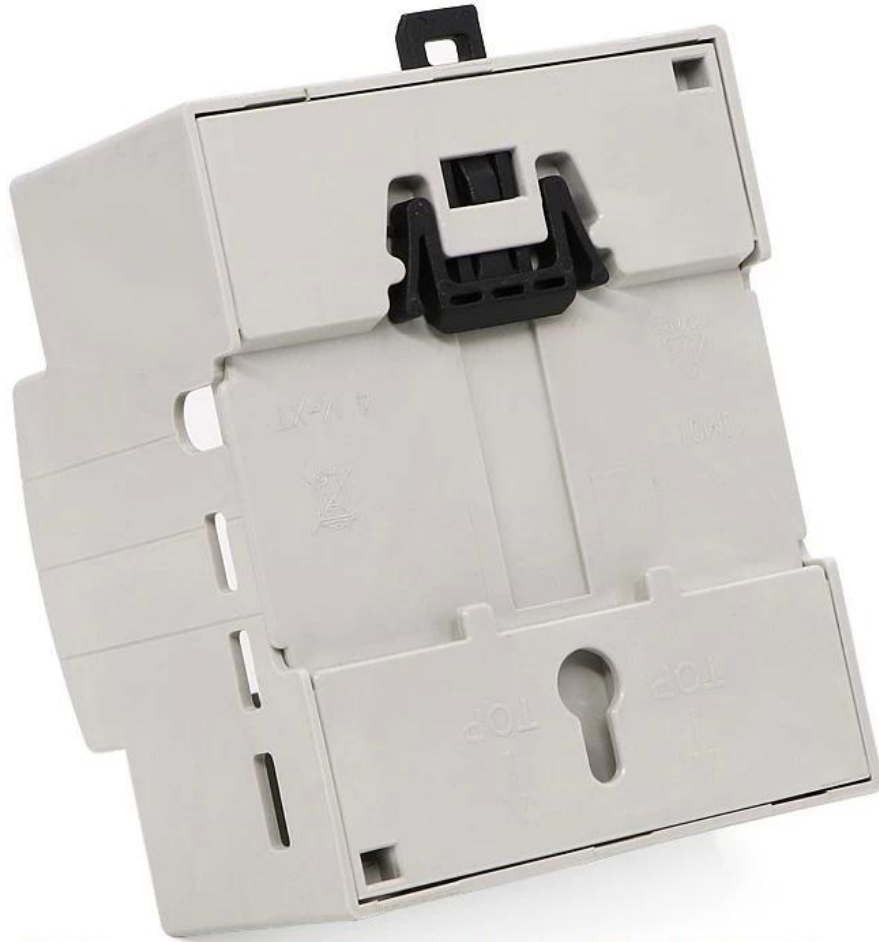
Size: 71*90*62 mm

Model No. AK-DR-63

2.79*3.54*2.44 inch

SZOMK

*Customizable
Cutout, sticker*



Weight: 56g

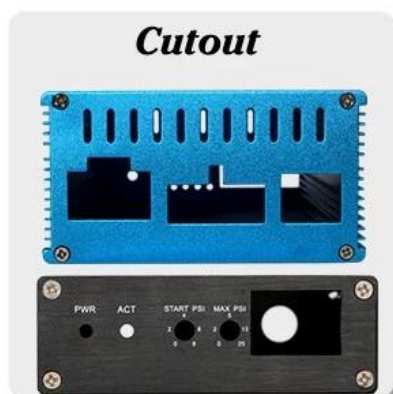
Size: 71*90*62 mm

Model No. AK-DR-63

2.79*3.54*2.44 inch

Type	Din rail enclosure
Model No.	AK-DR-63
Size	90X71X62mm
Color	Beige & Customized other color
Weight	56g

We are pleased to offer you:



- 1 Drilling, punching, etc.
- 2 Cutout, screen printing, laser engraving, sticker, memberane keyboard and so on
- 3 Short delivery time, usually after 3-5 days after payment (according to the quantity)
- 4 For an acceptable response for your inquiry

Applications:



It used widely in electronics, instrumentation, automation, communications, power supply units, student projects, amplifiers, and health care equipment, test equipment and measurement, industrial control, peripherals, interfaces, interfaces.

Din rail enclosure delivery:

Standard enclosure in stock	1-3 working days
Custom product in stock	3-10 working days
Custom product out of stock	10-20 working days

Tips:

Welcome you to contact us for more details and quotes inquiry electrical box will get a quick reply within 24 hours!

Contact with us:



T/T, WESTERN UNION, MONEY
GRAM AND PAYPAL ACCPETED.

Skype: szomk-002

Tel: +86 13392837250

E-mail: dee@szomk.net

Contact Us