

SZOMK din rail enclosure pcb mount abs enclosure AK-DR-39 87*60*35mm

Advantages of Din Rail ABS Plastic Enclosure Housing

1. Has a strong resistance to abrasion, weathering, corrosion.
2. Can be formed on the surface of different colors, to meet your requirements as well as possible.
3. Have a strong hardness, can protect your electronics well.

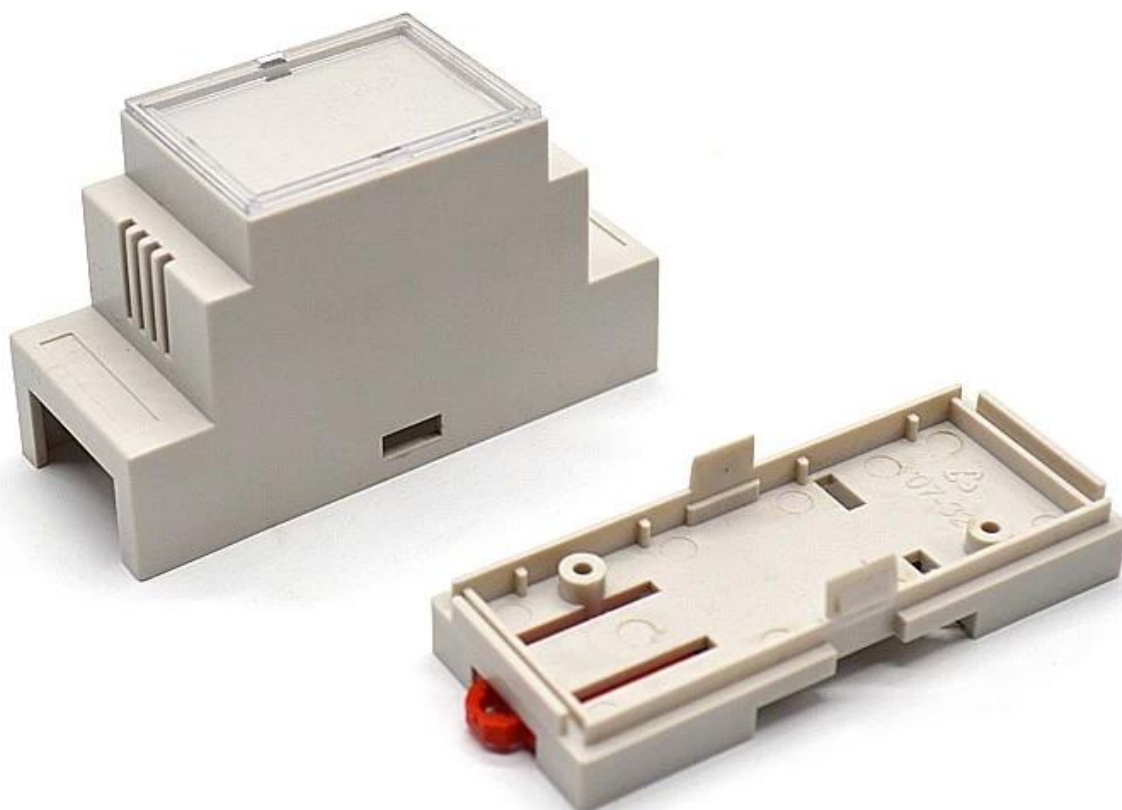
What we can do for you

- 1 Drilling, punching, etc. Welcome to provide tailor-made drawings.
- 2 powder coating, brush, polish, screen printing, laser cutting, sticker, engraving, acrylic sheet.
- 3 short lead time, normally 3-5 days after payment (according to quantity)
- 4 Quick response for your request

Product show□

SZOMK

*Customizable
Cutout, sticker*



Weight: 37g

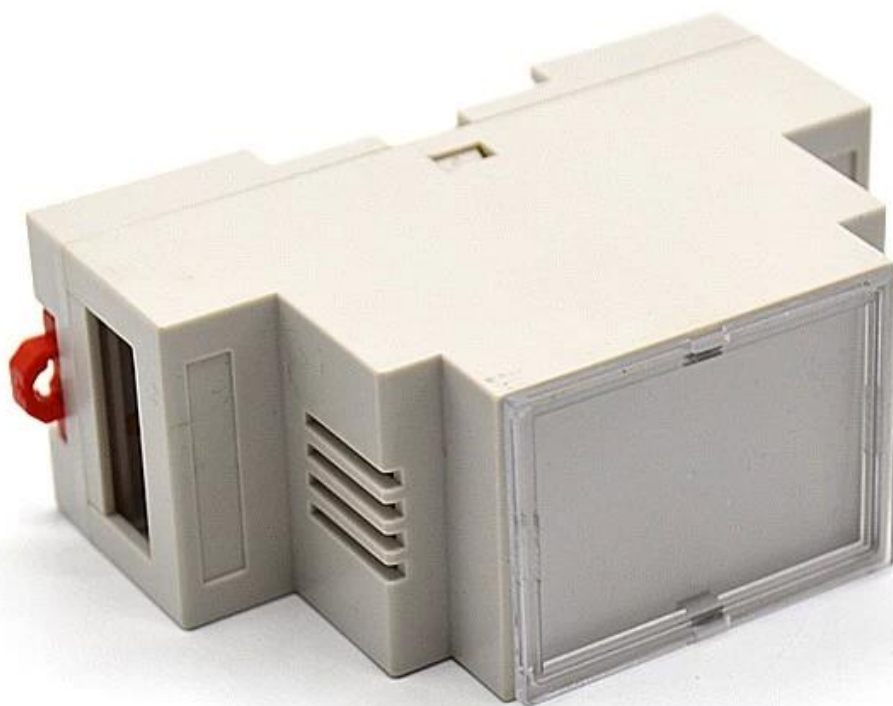
Size: 87*60*35 mm

Model No. AK-DR-39

3.43*2.36*1.38 inch

SZOMK

*Customizable
Cutout, sticker*



Weight: 37g

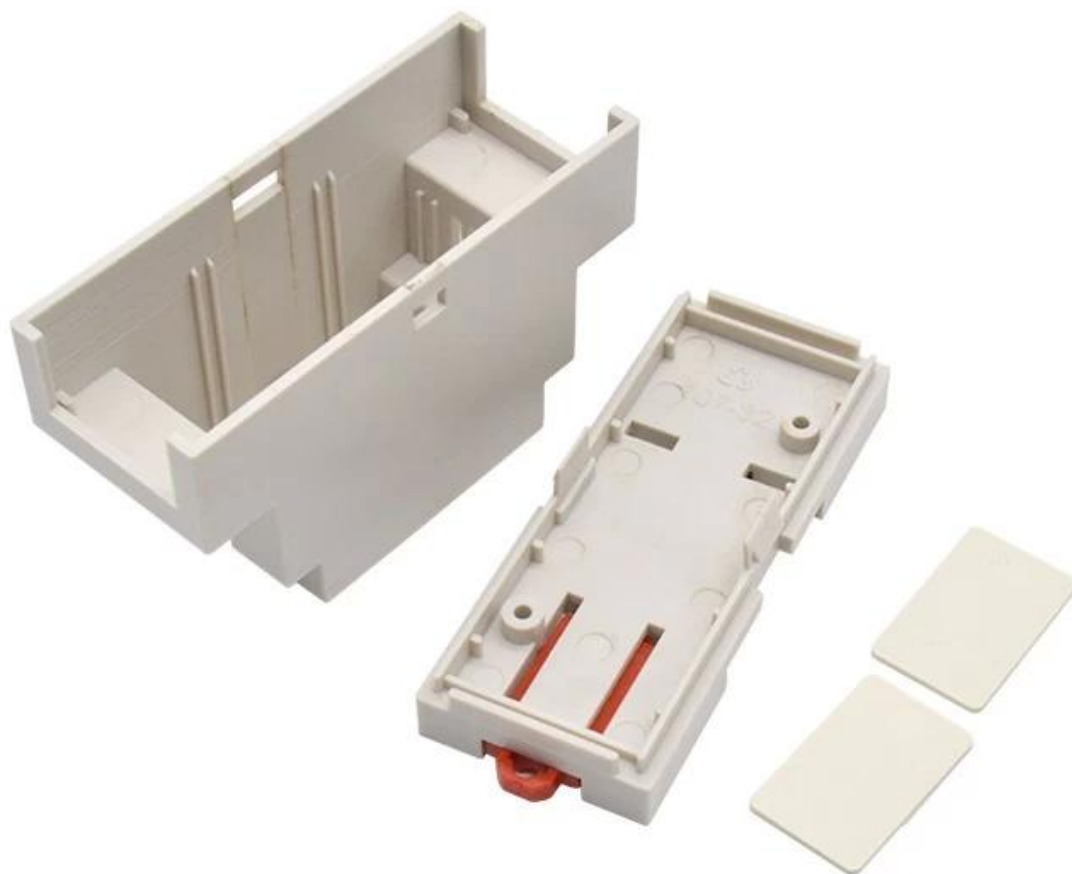
Size: 87*60*35 mm

Model No. AK-DR-39

3.43*2.36*1.38 inch

SZOMK

87*60*35 mm

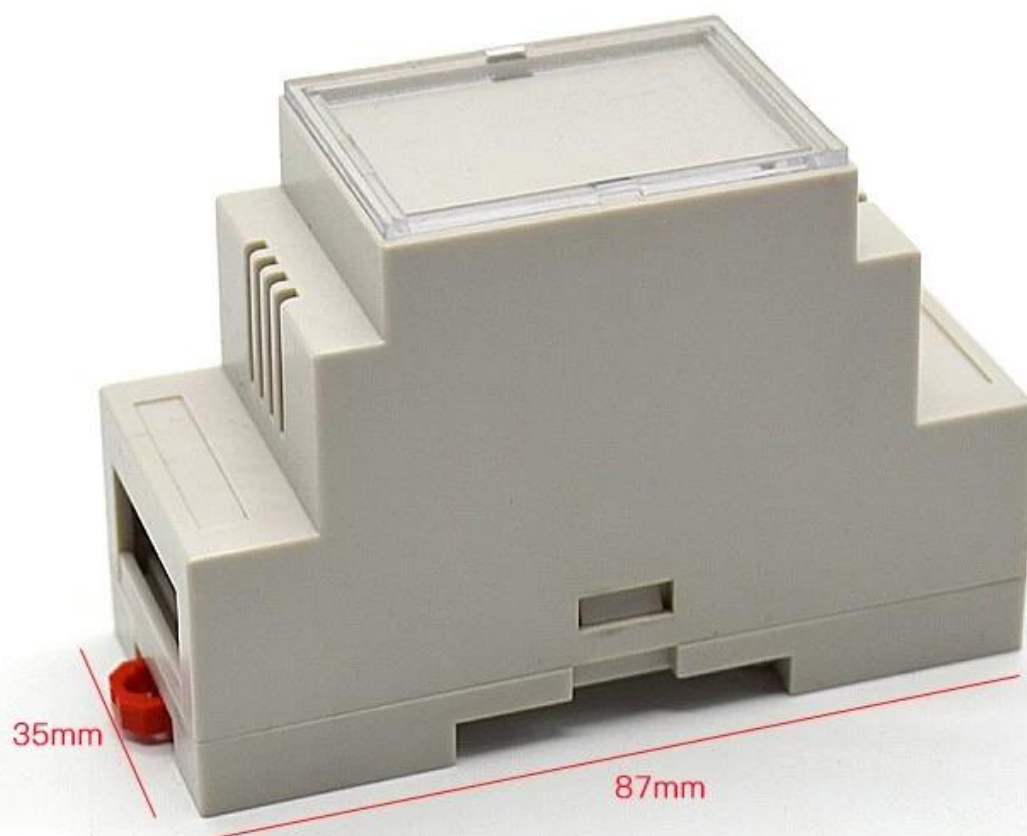


37g

AK-DR-39

SZOMK

Customizable
Cutout, sticker



Weight: 37g

Size: 87*60*35 mm

Model No. AK-DR-39

3.43*2.36*1.38 inch



T/T, WESTERN UNION, MONEY
GRAM AND PAYPAL ACCPETED.

Skype: 13691908154

Tel: +86 13691908154

E-mail: galaxie@szomk.net

Contact Us