

SZOMK new design outlet led abs plastic junction box for supply power AK-48 68*33*22mm

abs plastic enclosure show:

SZOMK

*Customizable
Cutout, sticker*



Weight: 15g

Size: 68*33*22 mm

Model No. AK-48

2.67*1.29*0.86 inch

SZOMK

Customizable
Cutout, sticker



Weight: 15g

Model No. AK-48

Size: 68*33*22 mm

2.67*1.29*0.86 inch

SZOMK

*Customizable
Cutout, sticker*



Weight: 15g

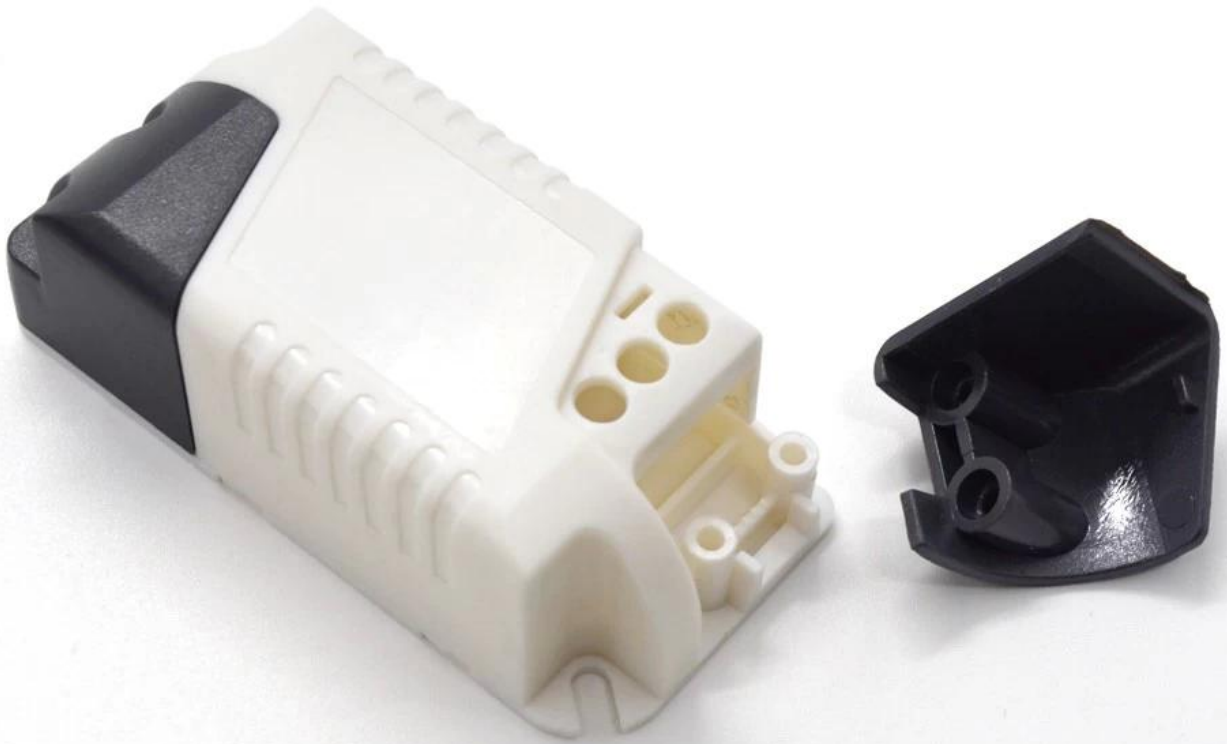
Size: 68*33*22 mm

Model No. AK-48

2.67*1.29*0.86 inch

SZOMK

*Customizable
Cutout, sticker*



Weight: 15g

Size: 68*33*22 mm

Model No. AK-48

2.67*1.29*0.86 inch

Type	power supply enclosure
Model No.	AK-48
Size	68X33X22mm
Weight	15g
Color	white and black&custom other color

We are pleased to offer you:



1. Drilling, punching, etc. Welcome customized drawings.
2. Drilling, screen printing, laser engraving, stickers and so on.
3. Short delivery time, usually 3-5 days after payment (according to the number)
4. For a timely response to your inquiry.

Applications:



It is widely used in electronics, instrumentation, automation, communication power supply units, student projects, amplifiers, health care equipment, test and measurement equipment, industrial control, peripherals and interface, the switch box.

LED driver enclosure packing:

1. enclosure industrial packing by poly bag.
2. Then by export standard carton.
3. As customer request

driver supply enclosure delivery:

Standard stock product	1-3 working days
Custom product in stock	3-10 working days
Custom product out of stock	10-30 working days

Tip:

Welcome to contact us for more details and quotes electrical box. Your inquiry will get prompt within 24 hours!



T/T, WESTERN UNION, MONEY
GRAM AND PAYPAL ACCPETED.

Skype: 13691908154

Tel: +86 13691908154

E-mail: galaxie@szomk.net

Contact Us