

It is widely used in electronic, instrumentation, automation, communications, power supply units, student projects, amplifiers, Medical and wellness devices, test and measurement equipment, industrial control, peripheral devices and interfaces, switch boxes.



### **Advantages of Plastic DIN Rail PLC Project Enclosure**

1. Strong resistance to wear, weathering and corrosion.
2. Can be formed on the surface of various colors to fit your requirements to the maximum.
3. It has high hardness and can securely protect electronic devices.

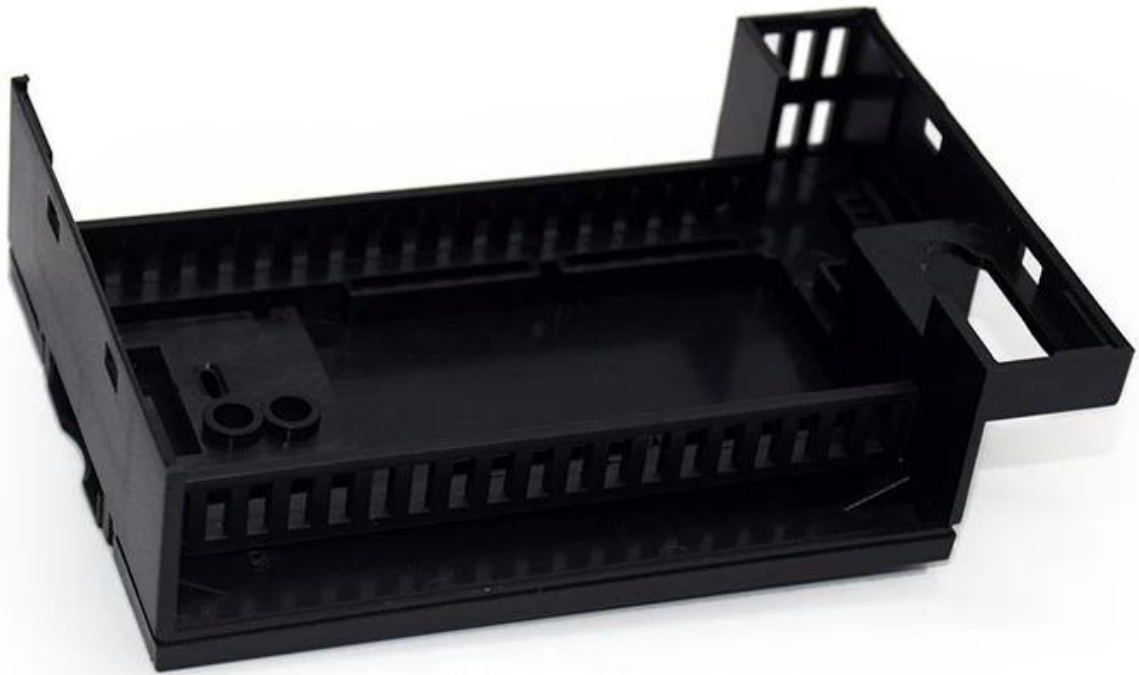
### **What we can do for you**

- 1 We welcome you to provide drawing habits such as drilling and punching.
- 2 powder coating, brush, polish, silk screen, laser engraving, stickers, engraving, acrylic sheet.
- 3 Short lead time, usually 3-5 days after payment (according to the quantity)
- 4 Prompt response to your inquiry

### **Detailed photo of plastic DIN rail PLC project enclosure box**

SZOMK

*Customizable  
Cutout, sticker*



Weight: 135g

Size: 120\*80\*60 mm

Model No. AK-P-19

4.72\*3.15\*2.36 inch

SZOMK

Customizable  
Cutout, sticker



Weight: 135g

Size: 120\*80\*60 mm

Model No. AK-P-19

4.72\*3.15\*2.36 inch

SZOMK

*Customizable  
Cutout, sticker*



Weight: 135g

Size: 120\*80\*60 mm

Model No. AK-P-19

4.72\*3.15\*2.36 inch

SZOMK

*Customizable  
Cutout, sticker*



Weight: 135g

Size: 120\*80\*60 mm

Model No. AK-P-19

4.72\*3.15\*2.36 inch

**Other customization**





**SZOMK**

## WE CAN DO

- ✓ *Provide thousands of public enclosure* MOQ: 1 piece
- ✓ *Small order custom* MOQ: 20-30 pcs
- ✓ *Design private custom enclosure (provide PCB)*
- ✓ *Molding, tooling (provide sample / STEP file)*



cutout, laser engrave, screen printing, sticker, acrylic plate, pvc label, color, silica gel rings, etc.

## WE CAN DO

For **HOUSING** some of the Processing,  
Openings, Screen, Stickers, PVC LABEL



**Packing and shipping method**



## Our packaging

Plastic foam packaging



Metal shell packaging



Plastic box packaging



# Packaging & Shipping



Contact Us





QQ

2033950667



Tel

81-755-83222882  
13923859760



Add

16-6Floor, 505Building ,Shangbu Industry  
Area, Hangtian RD, Futian District ,Shenzhen  
China



Email

elaine@chinaenclosure.com



skype

SZOMK-Elaine