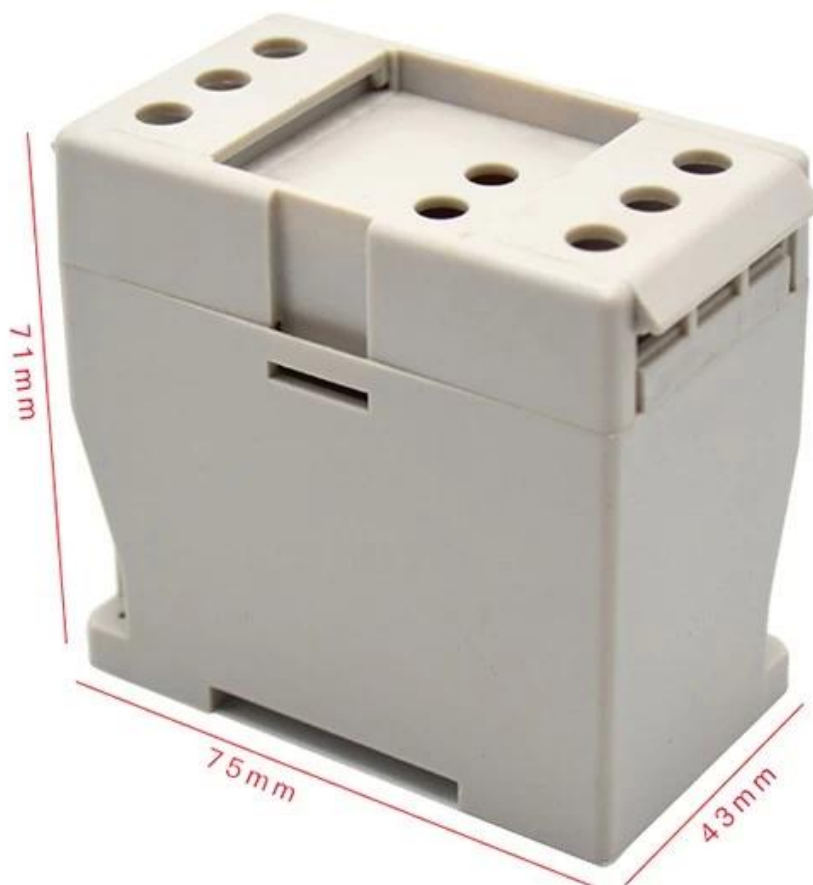


# Shenzhen abs plastic 75X71X43mm din rail industry junction enclosure manufacture

High quality enclosure show:

**SZOMK**

*Customizable  
Cutout, sticker*



Weight: 78g

Size: 75\*71\*43 mm

Model No. AK-DR-27

2.95\*2.80\*1.69 inch

SZOMK

Customizable  
Cutout, sticker



Weight: 78g

Size: 75\*71\*43 mm

Model No. AK-DR-27

2.95\*2.80\*1.69 inch

SZOMK

*Customizable  
Cutout, sticker*



Weight: 78g

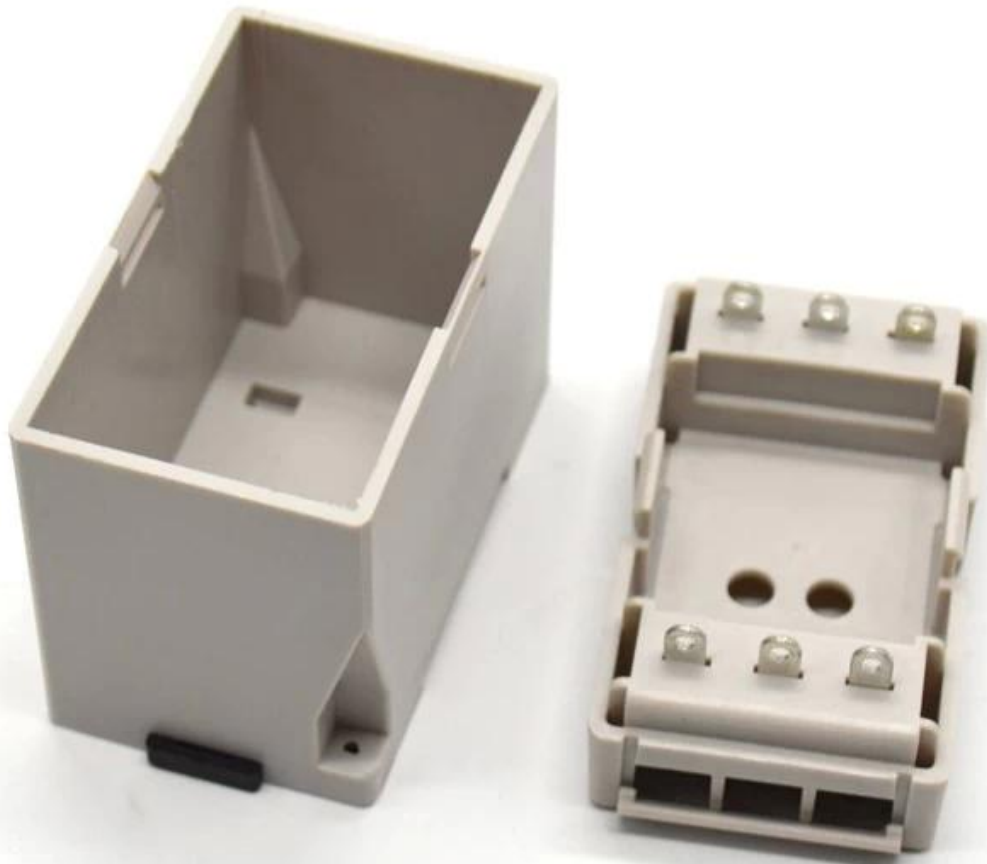
Size: 75\*71\*43 mm

Model No. AK-DR-27

2.95\*2.80\*1.69 inch

# SZOMK

*Customizable  
Cutout, sticker*



Weight: 78g

Size: 75\*71\*43 mm

Model No. AK-DR-27

2.95\*2.80\*1.69 inch

Type	Din rail plastic enclosure
Model No.	AK-DR-27
Size	75X71X13mm
Color	Light gray & Custom other color
Weight	78g

**We are pleased to offer you:**



- 1 Drilling, punching, etc. Welcome enary drawings
- 2 Drilling, screen printing, laser engraving, stickers and so on
- 3 Short delivery time, usually 3-5 days after payment (according to the number)
- 4 For an accepted response to your inquiry

## Applications:



It is widely used in electronics, instrumentation, automation, communication, power supply units, student projects, amplifiers, health care equipment, test and measurement equipment, Industrial control, peripherals, interfaces, interfaces

## Din rail enclosure show:

Standard enclosure in stock	1-3 working days
Custom product in stock	3-10 working days
Custom product out of stock	10-20 working days

## Tips:

Welcome to contact us for more details and quotes electrical box Your inquiry will get prompt reply within 24 hour!

## Contact with us:



T/T, WESTERN UNION, MONEY  
GRAM AND PAYPAL ACCPETED.

**Skype:** szomk-002

**Tel:** +86 13392837250

**E-mail:** dee@szomk.net

**Contact Us**