

It is widely used in electronic, instrumentation, automation, communications, power supply units, student projects, amplifiers, Medical and wellness devices, test and measurement equipment, industrial control, peripheral devices and interfaces, switch boxes.



## Vantagens da caixa de distribuição eletrônica de plástico abs

1. Tem uma forte resistência à abrasão, agentes atmosféricos, corrosão.
2. Pode ser formado na superfície de uma variedade de cores, para maximizar suas necessidades.
3. Tendo uma forte dureza, seus componentes eletrônicos podem ser bem protegidos.

## O que nós podemos fazer por você

- 1 perfuração, perfuração, etc. bem-vindo para fornecer projetos personalizados.
- 2 revestimento em pó, escova, polimento, serigrafia, gravação a laser, adesivo, gravura, folha de acrílico.
- 3 prazo de entrega curto, normalmente 3-5 dias após o pagamento (de acordo com a quantidade)
- 4 respostas rápidas para o seu pedido

## Imagens detalhadas da caixa de distribuição eletrônica do estojo de plástico

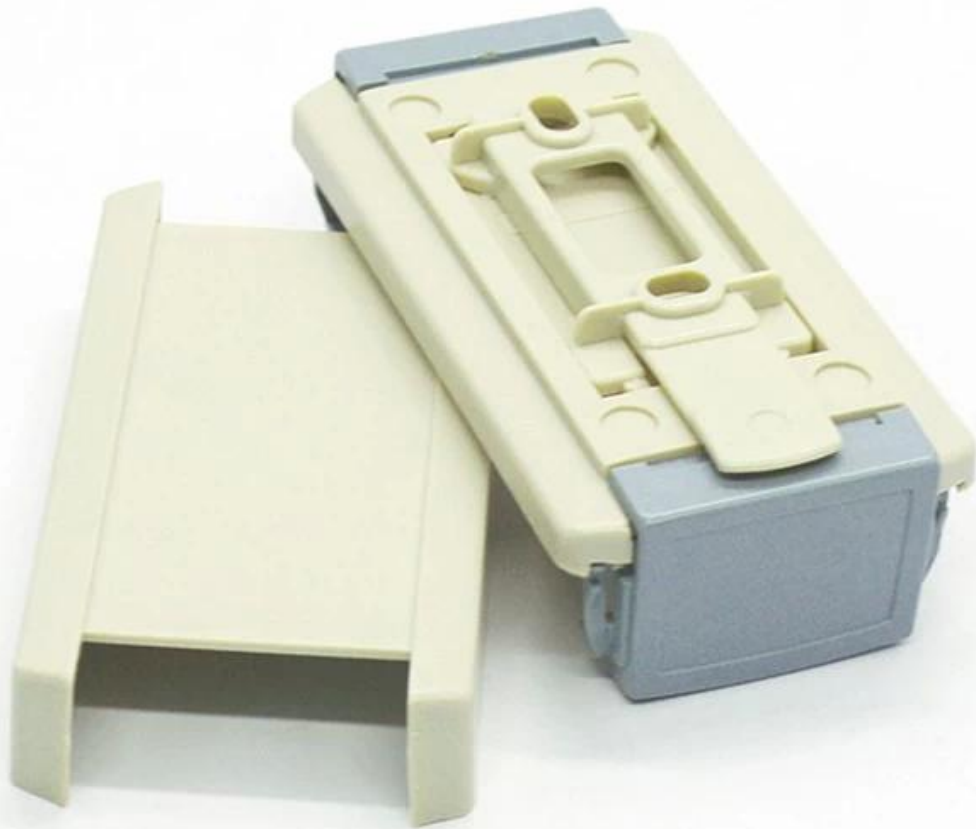
**SZOMK**



▶ **Enclosure Manufacturer**  
[www.chinaenclosure.com](http://www.chinaenclosure.com)

# SZOMK

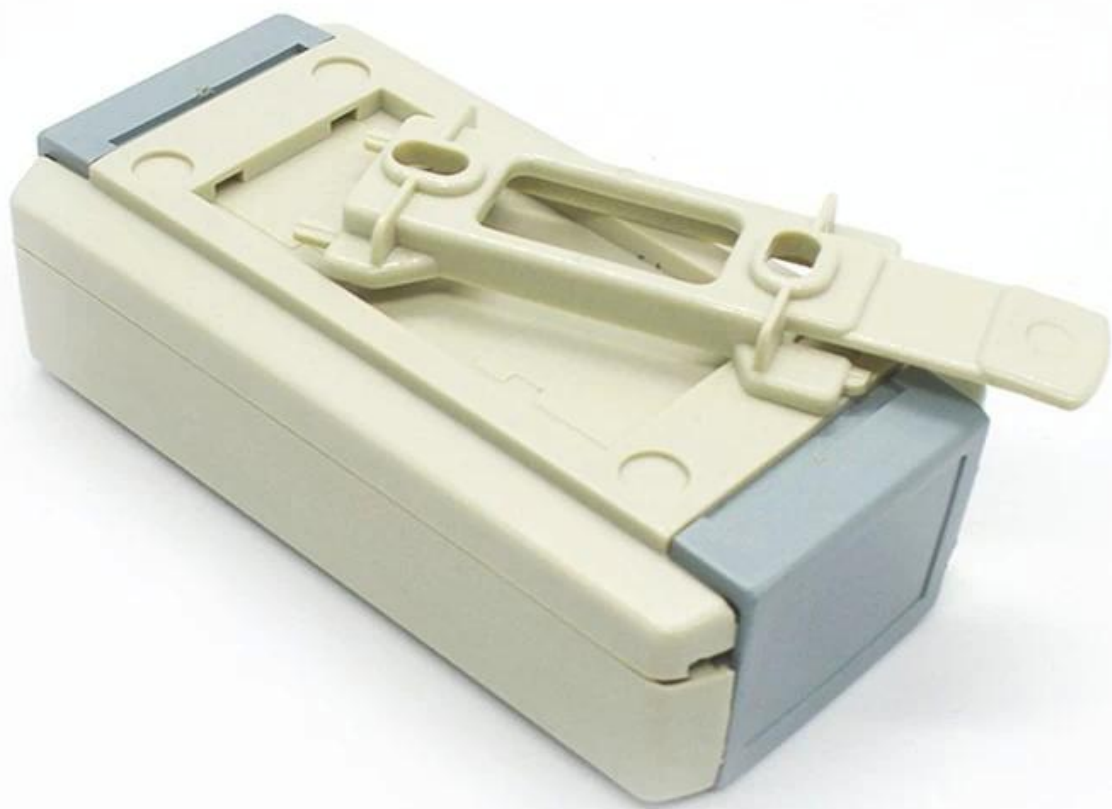
Customizable  
cutout, sticker  
silkscreen, color



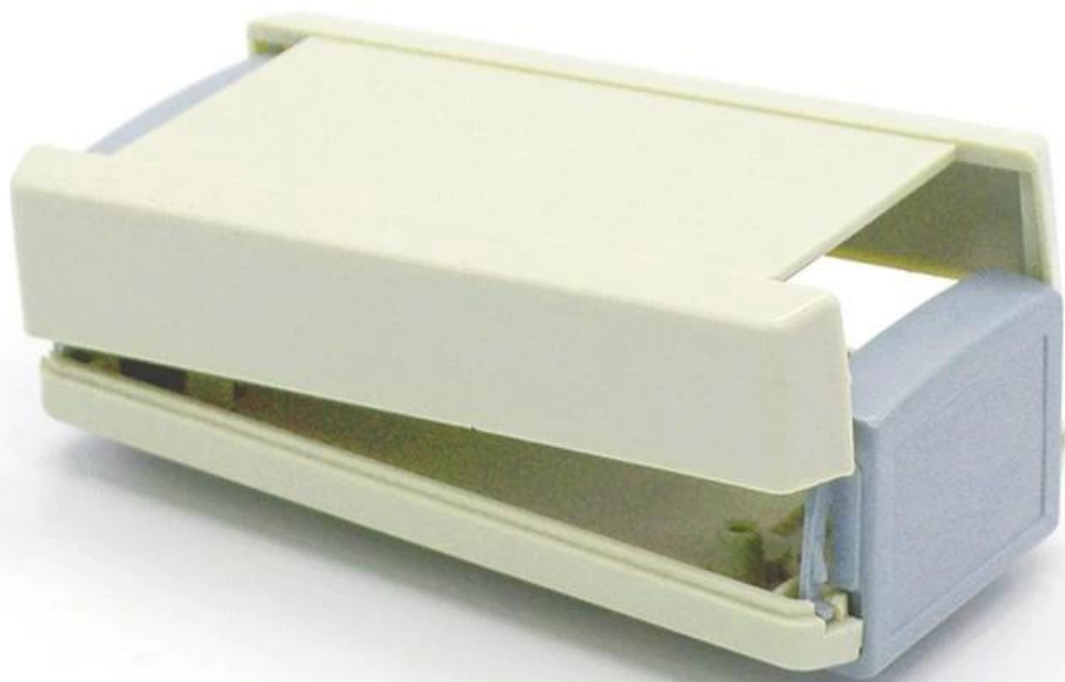
Weight: 52g  
Model No. AK-S-59

Size: 4.02\*2.09\*1.18 inch  
102\*53\*30 mm

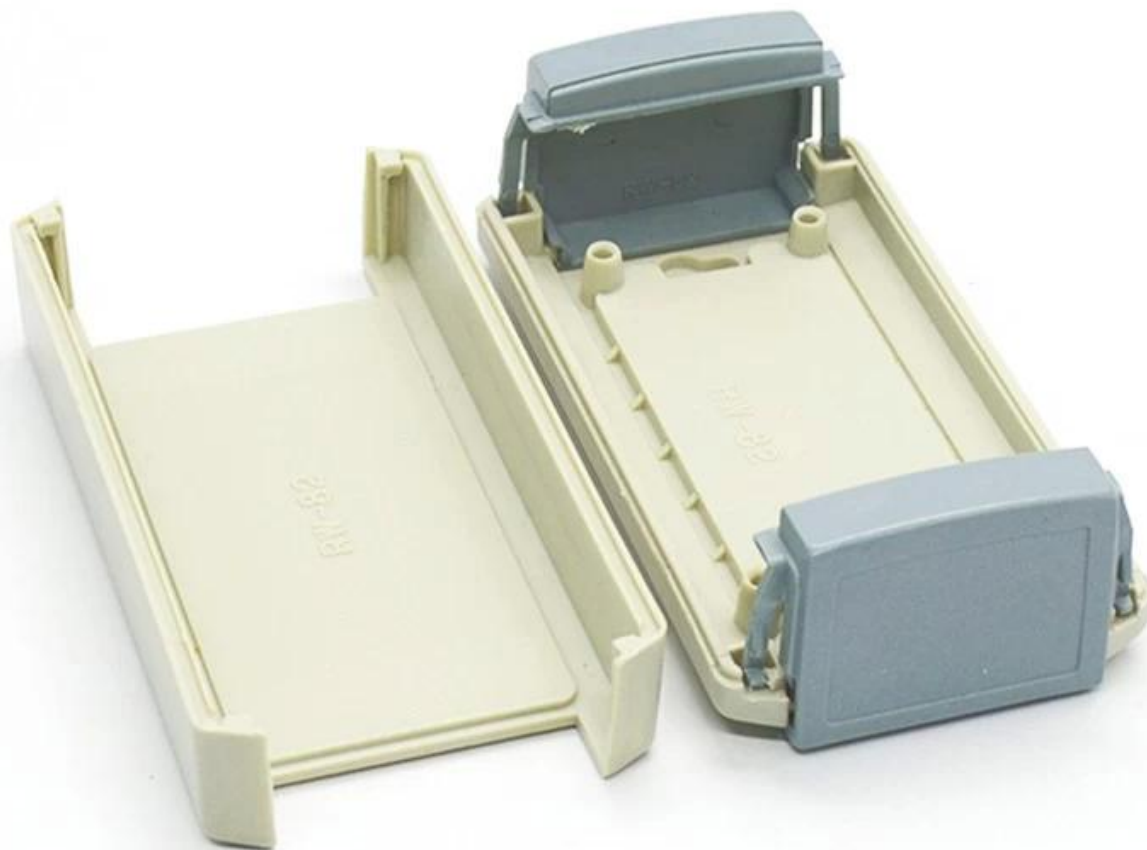
**SZOMK**



**SZOMK**



# SZOMK



**Outras personalizações**



**SZOMK**

## WE CAN DO

- ✓ **Provide thousands of public enclosure** *MOQ: 1 piece*
- ✓ **Small order custom** *MOQ: 20-30 pcs*
- ✓ **Design private custom enclosure (provide PCB)**
- ✓ **Molding, tooling (provide sample / STEP file)**



cutout, laser engrave, screen printing, sticker, acrylic plate, pvc label, color, silica gel rings, etc.

## WE CAN DO

**For HOUSING some of the Processing,  
Openings, Screen, Stickers, PVC LABEL**



**Embalagem e métodos de envio**

**SZOMK**

## Our packaging

Plastic foam packaging



Metal shell packaging

Plastic box packaging





# Packaging & Shipping

The image displays a variety of shipping and logistics options. On the left, a 3D rendering features a white cargo plane, a red semi-truck, a large container ship, and a white delivery van. On the right, a grid of logos includes TNT (sure we can), UPS (WE LOGISTICS), SF EXPRESS (顺丰速运), FedEx Express, EMS, and DHL. At the bottom, a horizontal bar contains logos for PayPal, WESTERN UNION, VISA, ESCROW, MasterCard, and HSBC.

## Contato



QQ

3010748891



Tel

81-755-83222882  
+86 18819073301



Add

16-6Floor, 505Building ,Shangbu Industry  
Area, Hangtian RD, Futian District ,Shenzhen  
China



Email

smile@szomk.net



skype

szomk017